



# Diocese of Midwest

## Stewardship Working Group

Presentation of Data Submitted by Parishes

# Episcopal Blessing

---



This document has been prepared for general distribution with the blessing of + PAUL, Bishop of Chicago and the Diocese of the Midwest, OCA.

# The Goal

---



The purpose of this project is to present a plan at the 2017 Diocesan Assembly that will move the Diocese and OCA assessment from a “Head Tax” to a percentage of income based assessment.

# Why Change:

## Develop an equitable funding policy!

---

- ☞ Respond to the Scriptural injunction to tithe
- ☞ Respond to the 18<sup>th</sup> All-American Council's encouragement to change to a proportional giving model
- ☞ Current "Head Tax" methodology assumes the median household incomes is the same for all parishes
- ☞ A desire for fair and equitable assessments across the Dioceses of the Midwest

# Purpose of this Document

---



- ✧ The purpose of this document is to facilitate a diocesan-wide discussion on percentage of income assessment methodology.
- ✧ This document demonstrates what current diocesan assessments would look like expressed as percentage of eligible income.
- ✧ It uses the financial data provided by the parishes to the Stewardship Working Group.
- ✧ In accordance with the promise to treat information confidentially, the names of parishes have been withheld.

# Collection of Financial Information

---

- ✧ Method and rationale for collecting financial information can be found in the document entitled “Parish Assessment Policy” (available at <http://domoca.org/downloads.html>).
- ✧ 51 diocesan parishes have submitted financial information.
- ✧ This is a statistically significant sample.

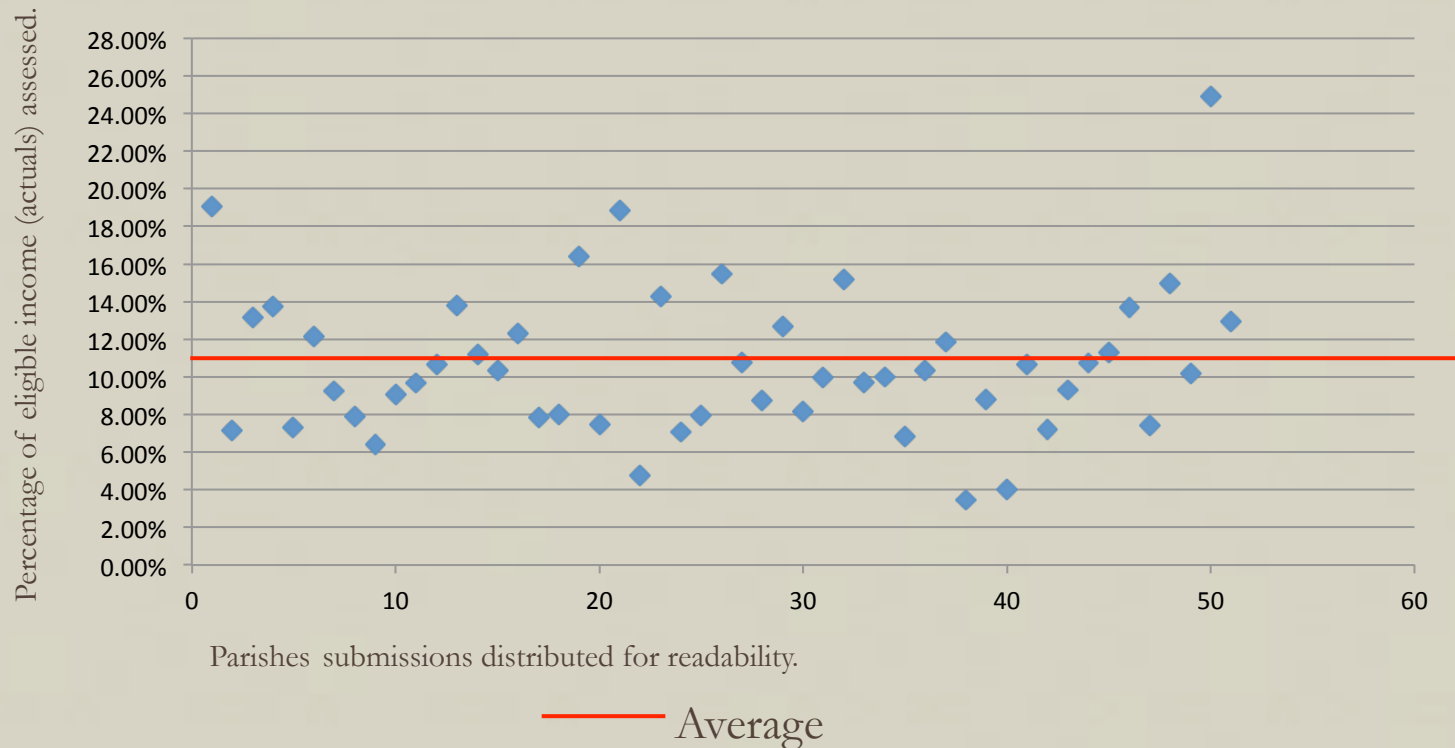
# The Data Presented: Current Assessment as a %

---

Shows what the parish assessments for sample years 2014, 2013, and 2012 would look like as a percentage of eligible assessment income. *See* Percentage Assessment Calculation Sheet (expressing Line 11 as a percentage of Line 10 for the sample years). (available at <http://domoca.org/downloads.html>)

# 2014 Financial Data: Parish Percentage Giving

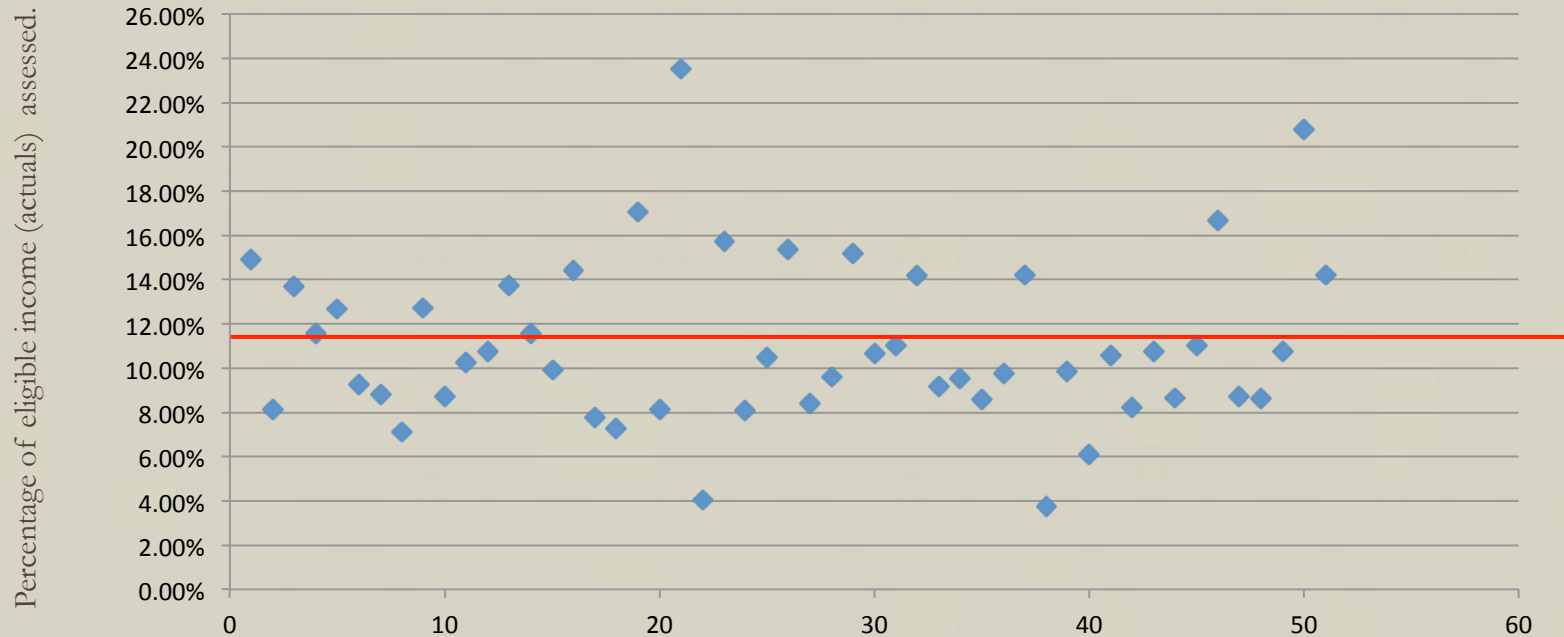
2014





# 2013 Financial Data: Parish Percentage Giving

2013

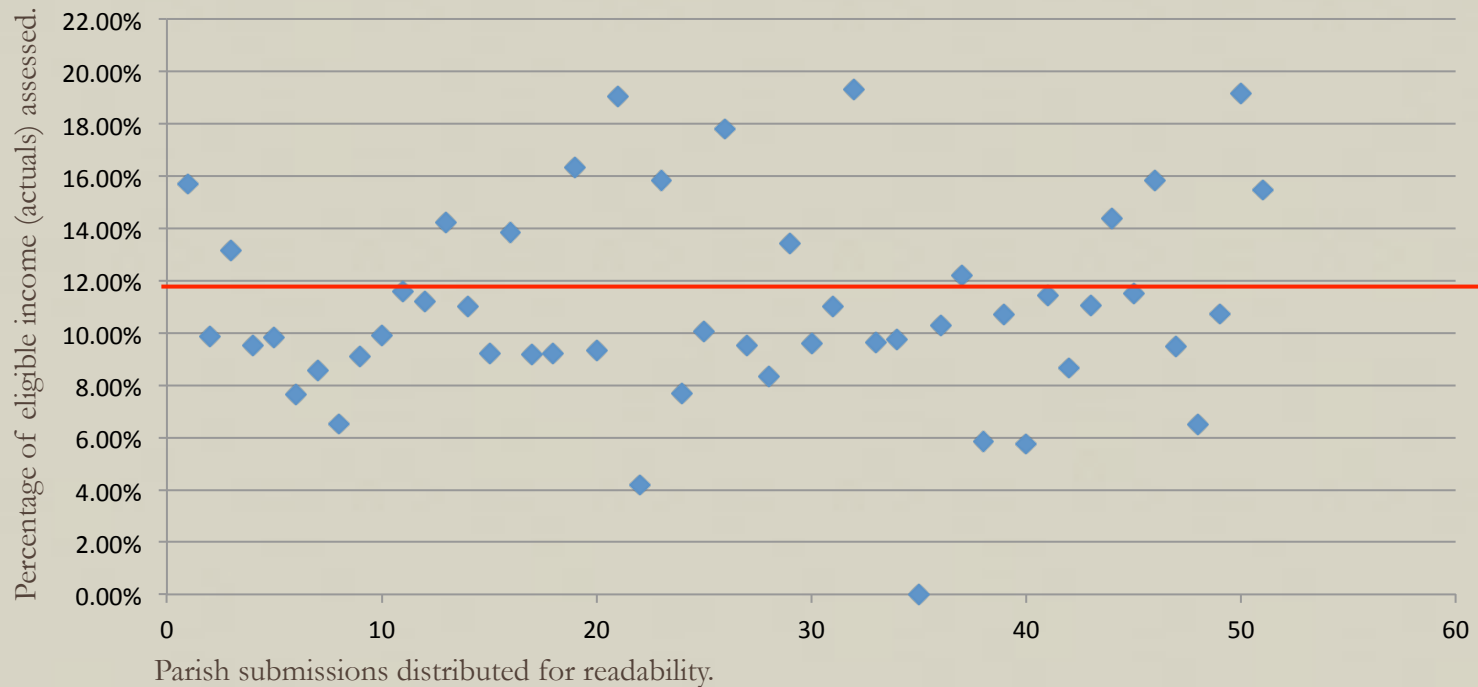


Parish submissions distributed for readability.

— Average

# 2012 Financial Data: Parish Percentage Giving

2012



— Average

# Open for Comment: Your Voice Matters!

---

- ☞ If you have any comments or concerns, please feel free to contact the Stewardship Group at the following e-mail address: [midwestdiocesestewardship@gmail.com](mailto:midwestdiocesestewardship@gmail.com).
- ☞ A member of the Stewardship Group will address answer your e-mail in a timely fashion.
- ☞ This is an opportunity to have have your voice heard!

# Thank you!

---



Bishop Paul, Fr. John Zdinak, the Stewardship Group and the entire Diocesan Authority wish to thank the parishes for participating in this important project.

To those parishes that have not submitted financial data, it is not too late to have your voice heard. Please submit your information to the Stewardship Group!